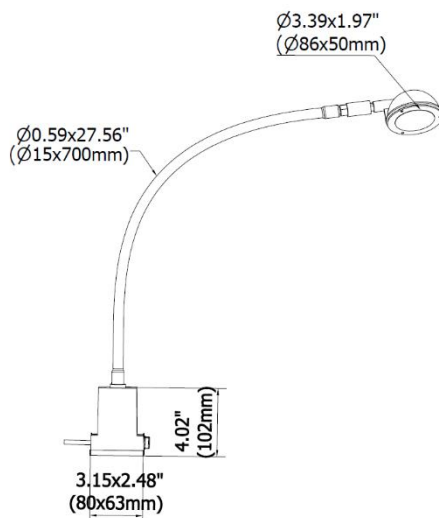




Lighting system with latest generation multichip LED for natural lighting that does not alter colors and does not tire the eyes. Extremely versatile, safe and reliable, with its flexible arm it is ideal for lighting work benches.

- ABS and aluminum spot
- High efficiency LED technology – free maintenance
- Multichip LED high performance and high color rendering
- 5000 K light color
- Power supply 230 VAC (internal driver LED)
- Flex arm version

DIMENSIONS



MECHANICAL FEATURES

Model	960122SF1	960122SF2
Casing material	Aluminum and ABS spot , plastic base, flexible steel stem covered by sheath	
Side Caps	ABS	
Surface Treatment	RAL 7035	Black
Front glass	Transparent polycarbonate	
Weight	~ 2.65 lb 1,20 kg	~ 2.65 lb 1,20 kg
Protection Index	IP30	
Operating Temperature	-20 °C / + 45 °C	
Installation	Screw, CLAMP03, B01	

ELECTRICAL FEATURES

Model	960122SF1	960122SF2
Power input	4,5 W (@500mA)	4,5 W (@500mA)
Power supply	110 ÷ 240 Vac - 50/60 Hz	110 ÷ 240 Vac - 50/60 Hz
Electrical connection	PVC cable 2x 0,75mmq L.2 m with EUROPLUG	
Insulation Class	Class II	
Efficiency Class	A/A+/A++/A+++ (Integrated LED module) compliant with UE Law No. 874/2012	

CONNECTION 110-240 Vac

PVC 2x 0,75 mm² L= 6.56 ft. (2 m) with Europlug

Conductor

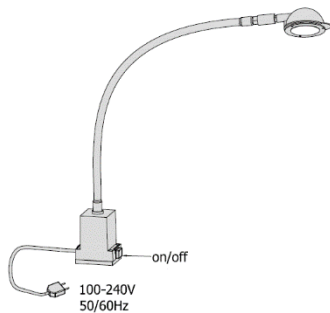
Connection

Brown

L – 230 V

Blue

N – 230V



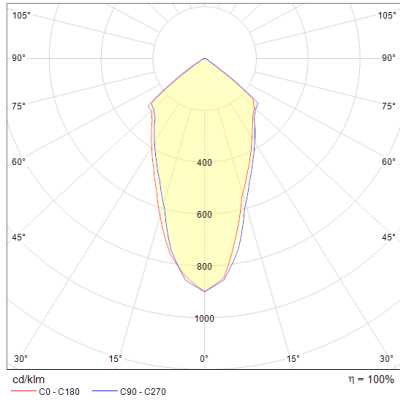
OPTICAL FEATURES

Model	N° and Type of LEDs	LED Lifespan	Light Color	CRI	Light Beam Angle	Luminous Flux	Efficiency
960122SF1	1 Multichip LED	60 000 h L70 **	5000 K	80	120°	~ 500 lm	~ 111 lm/W
960122SF2	1 Multichip LED	60 000 h L70 **	5000 K	80	120°	~ 500 lm	~ 111 lm/W

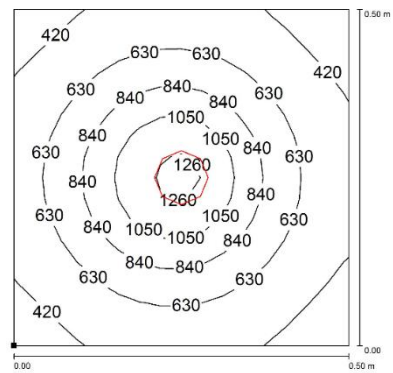
** Flow beam reduced by less than 30% after 60,000 hours

PHOTOMETRIC DIAGRAMS

120° Optics



960122SF1 / 960122SF2



MOUNTING OPTIONS

Product pictures

Description

Code



Robust, versatile vibration-resistant metal clamp made of stainless steel. Quick assembly on workbenches, sewing machines etc.

CLAMP03



The strong neodymium magnetic base with high adhesion is the perfect solution for all applications that require both high adhesion and frequent changes in light position.

B01

ORDER CODES

Model	Description
960122SF1	P996, 27.56"(700mm), 120°, 4.5W, 230Vac, Cable 6.5ft(2m) Europlug, WHITE
960122SF2	P996, 27.56"(700mm), 120°, 4.5W, 230Vac, Cable 6.5ft(2m) Europlug, BLACK
CLAMP03	Metal clamp for 2,36x2,36"(80x63mm) base
B01	Magnetic base with screw 3.15x2.48 inc.(80x63mm)