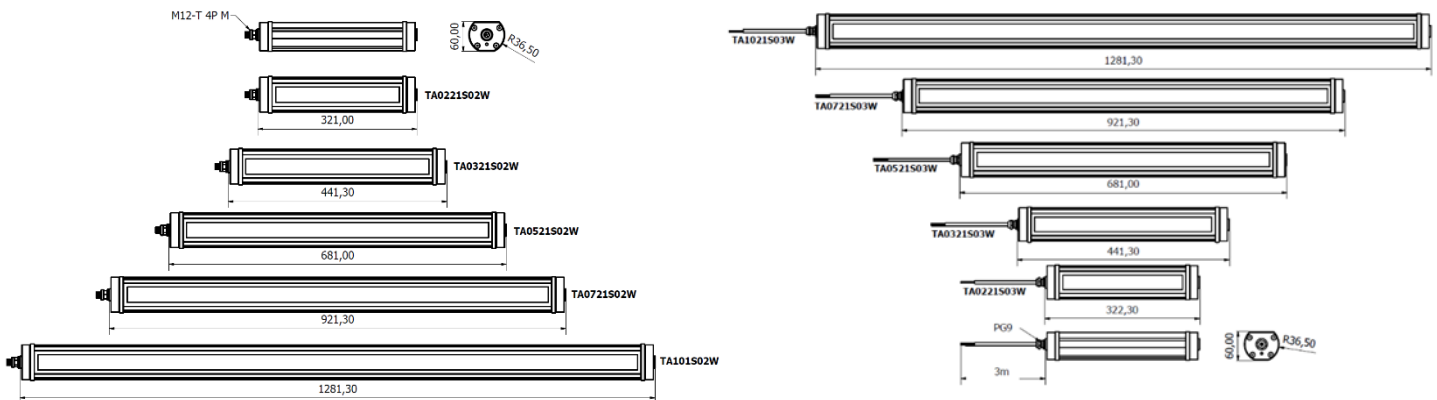


TRACKALPHA PRO is the integrated 24Vdc surface-mounted machine light for generic CNC machines, manufacturing machinery and industrial automation. TRACKALPHA PRO is the perfect versatile solution for retrofitting on machines that require it, thanks to the combination of 70 mm diameter profile, M12 connector and mounting supports available in two versions: anodized aluminum clips or side mounting brackets that allow precise adjustment of the direction of the luminous flux up to 90° and provide secure fastening and flexible installation. The side brackets can also be attached using the incredibly strong neodymium magnet for added strength in confined spaces. TRACKALPHA PRO offers five standard lengths thanks to the perfect modular structure in extruded aluminum and optimized PCBs. The original 3 meter cable or the M12 connector cod. T provide a safe, quick and simple electrical connection.

- Aluminium housing resistant to oil, coolants, lubricants, and dust.
- LED lifespan: 60,000 hours > (L 70)
- Hardened frosted glass 5 thick is debris resistant, it doesn't change color and provides consistent illumination
- Light color temperature 5000 K - CRI 80
- Four standard lengths available to meet all different applications requirements
- 24V via M12 or 3m cable for more flexibility
- 120° lens to provide wide and intense lighting
- Two mounting options for a quick and practical installation: TAFX03 side brackets, TACLIP rear clips,
- Approval: cURus in compliance with UL2018 / CSA / CE

DIMENSIONS





MECHANICAL FEATURES

Model	TA0221S02W	TA0221S03W	TA0321S02W	TA0321S03W	TA0521S02W	TA0521S03W	TA0721S02W	TA0721S03W	TA1021S02W	TA1021S03W
Casing Material	Anodized extruded aluminum									
Side Enclosers	Anodized aluminum									
Surface Treatment	Standard: 10 microns of natural aluminum solution oxidation									
Front Glass	Extra clear tempered 0.20 in (5 mm) thick frosted glass IK06									
Weight	2.65 lb (1.20kg)	3.09 lb (1.4kg)	3.64 lb (1.65kg)	4.08 lb (1.85kg)	5.62 lb (2.55kg)	6.06 lb (2.75kg)	7.28 lb (3.30kg)	7.72 lb (3.50kg)	10.25 lb (4.65 kg)	10.70 lb (4.85kg)
Protection Index	IP67 Compatible with NEMA Type 12									
Impact Resistance	1.00 N m/s		1.00 N m/s		1.00 N m/s		1.00 N m/s		1.00 N m/s	
Operating Temperature	04°F (-20°C) to +113°F (+ 45°C)									
Installation	TAFX02 Stainless-steel side brackets / TACLIP Aluminum rear Clip / Magnet B03									

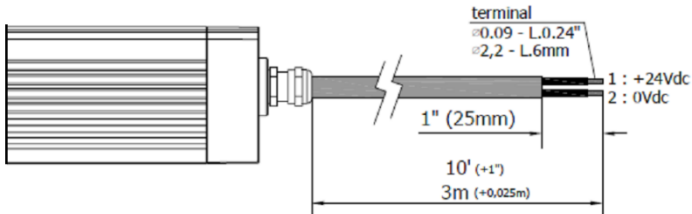
ELECTRICAL FEATURES

Model	TA0221S02W	TA0221S03W	TA0321S02W	TA0321S03W	TA0521S02W	TA0521S03W	TA0721S02W	TA0721S03W	TA1021S02W	TA1021S03W
Power Input	13 W		19.5 W		32.5 W		45.5 W		65 W	
Power Supply	22-28 Vdc									
Current	0.56 A @ 24 Vdc		0.85 A @ 24 Vdc		1.35 A @ 24 Vdc		1.9 A @ 24 Vdc		2.7 A @ 24 Vdc	
Device Power Protection	Full protection against reverse polarity									
Electrical Connection	M12	Cable	M12	Cable	M12	Cable	M12	Cable	M12	Cable
Insulation Class	Class III (SELV)									
Efficiency Class	E (Integrated LED module) compliant with UE LAW No. 2019/2020									

CONNECTION* with M12-4P Male T Coding

Male	Female	Pin	Connection
		1	+24 Vdc
		2	Not Connected
		3	0 Vdc
		4	Not Connected

CONNECTION with 10 ft. (3m) Cable, Standard length

PVC 2x 0.17 in ² (0.75 mm ²) L= 10 ft. (3 m)	Conductor	Connection
	1 Black	+24 Vdc
	2 Black	0

OPTICAL FEATURES

Model	N° and Type of LEDs	LED Lifespan	Light Color	CRI	Light Beam Angle	Luminous Flux	Efficiency
TA0221S02W	42 Mid Power LED	60.000 L70**	5000 K	80	120°	~1510 lm	~116 lm/W
TA0221S03W	42 Mid Power LED	60.000 L70**	5000 K	80	120°	~1510 lm	~116 lm/W
TA0321S02W	63 Mid Power LED	60.000 L70**	5000 K	80	120°	~2265 lm	~116 lm/W
TA0321S03W	63 Mid Power LED	60.000 L70**	5000 K	80	120°	~2265 lm	~116 lm/W
TA0521S02W	105 Mid Power LED	60.000 L70**	5000 K	80	120°	~3770 lm	~116 lm/W
TA0521S03W	105 Mid Power LED	60.000 L70**	5000 K	80	120°	~3770 lm	~116 lm/W
TA0721S02W	147 Mid Power LED	60.000 L70**	5000 K	80	120°	~5280 lm	~116 lm/W
TA0721S03W	147 Mid Power LED	60.000 L70**	5000 K	80	120°	~5280 lm	~116 lm/W
TA1021S02W	210 Mid Power LED	60.000 L70**	5000 K	80	120°	~7550 lm	~116 lm/W
TA1021S03W	210 Mid Power LED	60.000 L70**	5000 K	80	120°	~7550 lm	~116 lm/W

PHOTOMETRIC DIAGRAMS

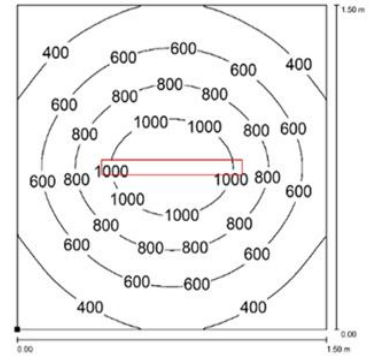
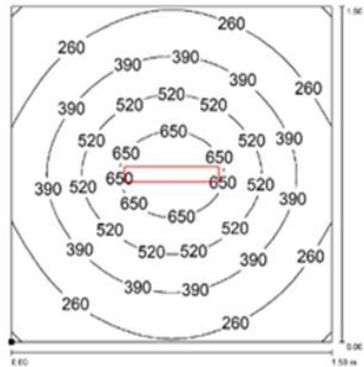
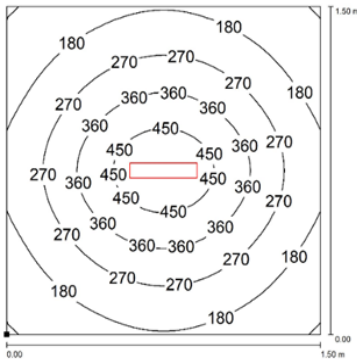
120° Flow beam



TA0221S02W / TA0221S03W

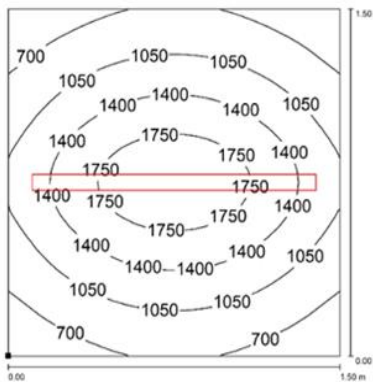
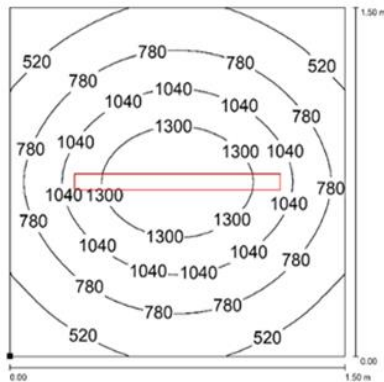
TA0321S02W / TA0321S03W

TA0521S02W / TA0521S03W




TA0721S02W / TA0721S03W

TA1021S02W / TA1021S03W






Distance graphic: 1m

PLUG OPTION M12 Cable Connector

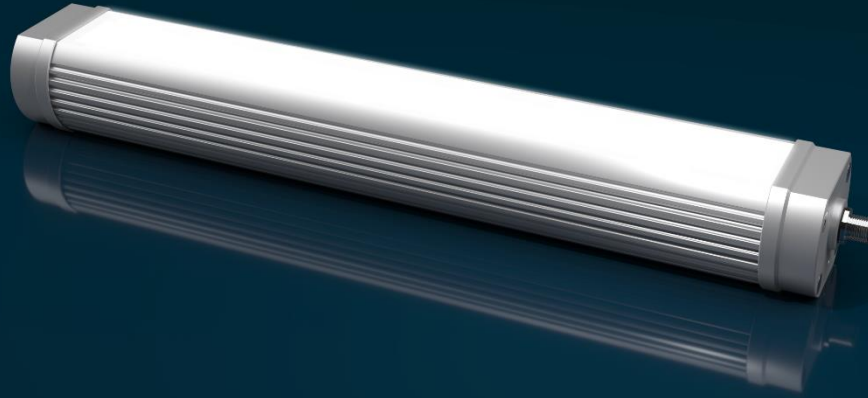
Product pictures	Description	Code product
	M12; PIN: 4; female; T Code-Power; Straight for cable \varnothing 0.32-0.39 (8-10 mm); screw terminal	N13110001040302

MOUNTING OPTIONS

Product pictures	Description	Code product
	Robust, versatile and vibration resistant, it is a 90° angle adjustment bracket. Made of stainless steel, it is the perfect solution when you need to adjust the direction of the flow beam in high-vibrating applications.	TAFX02
	Sturdy, flexible and vibration resistant, it is a 30° angle adjustment bracket. Made of anodized aluminum, it is the perfect solution when you need to retrofit an obsolete machine tools and machining centers.	TACLIP
	Strong magnetic disc made of neodymium. Use along with TAFX02 brackets when you need to move the light frequently and to different positions. Suitable to use in high-vibrating applications.	B03

ORDER CODES

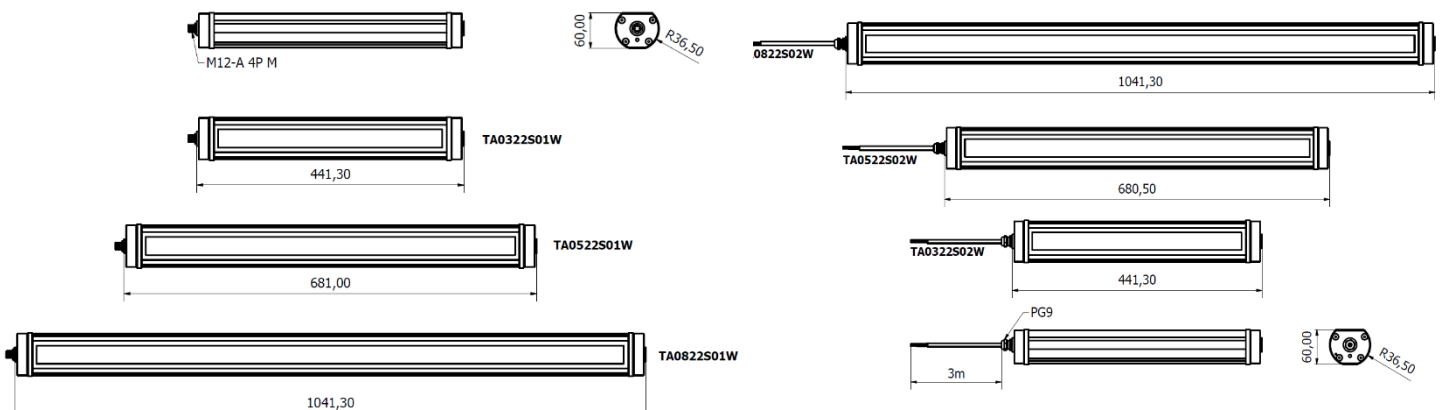
Model	Description
TA0221S02W	TRACKALPHA PRO, 12.64"(321 mm), 120°, 13W, 24Vdc, M12-T 4P Male
TA0221S03W	TRACKALPHA PRO, 12.64"(321 mm), 120°, 13W, 24Vdc, Cable 10ft (3mt)
TA0321S02W	TRACKALPHA PRO, 17.36"(441 mm), 120°, 19.5W, 24Vdc, M12-T 4P Male
TA0321S03W	TRACKALPHA PRO, 17.36"(441 mm), 120°, 19.5W, 24Vdc, Cable 10ft (3mt)
TA0521S02W	TRACKALPHA PRO, 26.81"(681 mm), 120°, 32.5W, 24Vdc, M12-T 4P Male
TA0521S03W	TRACKALPHA PRO, 26.81"(681 mm), 120°, 32.5W, 24Vdc, Cable 10ft (3mt)
TA0721S02W	TRACKALPHA PRO, 36.26"(921 mm), 120°, 45.5W, 24Vdc, M12-T 4P Male
TA0721S03W	TRACKALPHA PRO, 36.26"(921 mm), 120°, 45.5W, 24Vdc, Cable 10ft (3mt)
TA1021S02W	TRACKALPHA PRO, 50.43"(1281 mm), 120°, 65W, 24Vdc, M12-T 4P Male
TA1021S03W	TRACKALPHA PRO, 50.43"(1281 mm), 120°, 65W, 24Vdc, Cable 10ft (3mt)
TAFX02	TRACKALPHA, stainless steel side brackets kit 90°
TACLIP	TRACKALPHA, rear mounting clips kit
B03	Magnet Diam 1.9" (48 mm)
N13110001040302	M12; PIN: 4; female; T Code-Power; Straight for cable \varnothing 0.32-0.39 (8-10 mm); screw terminal



TRACKALPHA PRO is the integrated 230Vac surface-mounted machine light for generic CNC machines, manufacturing machinery and industrial automation. TRACKALPHA PRO is the perfect versatile solution for retrofitting on machines that require it, thanks to the combination of 70 mm diameter profile, M12 connector and mounting supports available in two versions: anodized aluminum clips or side mounting brackets that allow precise adjustment of the direction of the luminous flux up to 90° and provide secure fastening and flexible installation. The side brackets can also be attached using the incredibly strong neodymium magnet for added strength in confined spaces. TRACKALPHA PRO offers five standard lengths thanks to the perfect modular structure in extruded aluminum and optimized PCBs. The original 3 meter cable or the M12 connector cod. T provide a safe, quick and simple electrical connection.

- Aluminum housing resistant to oil, coolants, lubricants, and dust.
- LED lifespan: 60,000 hours > (L 70)
- Hardened frosted glass 5 thick is debris resistant, it doesn't change color and provides consistent illumination
- Light color temperature 5000 K - CRI 80
- Four standard lengths available to meet all different applications requirements
- 230VAC via M12 or 3m cable for more flexibility
- 120° lens to provide wide and intense lighting
- Two mounting options for a quick and practical installation: TAFX03 side brackets, TACLIP rear clips,
- B03 magnet can be used for a further resistance when brackets are used in narrow spaces.
- Approval: CE

DIMENSIONI



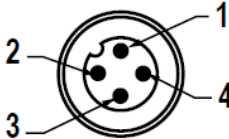
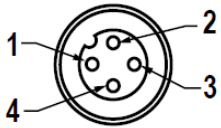
MECHANICAL FEATURES

Model	TA0322S01W	TA0322S02W	TA0522S01W	TA0522S02W	TA0822S01W	TA0822S02W
Casing Material	Anodized extruded aluminum					
Side Enclosers	Anodized aluminum					
Surface Treatment	Standard: 10 microns of natural aluminum solution oxidation					
Front Glass	Extra clear tempered 0.20 in (5 mm) thick frosted glass IK06					
Weight	~1,95kg	~2,15kg	~2,75kg	~2,90kg	~4,10kg	4,30kg
Protection Index	IP67					
Impact Resistance	1.00 N m/s					
Operating Temperature	04°F (-20°C) to +113°F (+ 45°C)					
Installation	TAFX02 Stainless-steel side brackets / TACLIP Aluminum rear Clip / Magnet B03					

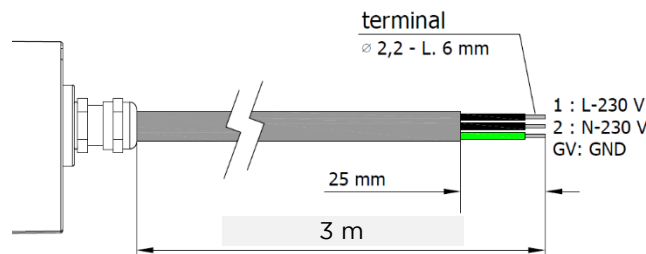
ELECTRICAL FEATURES

Model	TA0322S01W	TA0322S02W	TA0522S01W	TA0522S02W	TA0822S01W	TA0822S02W
Power Input	25 W	25 W	42 W	42 W	65 W	65 W
Power Supply	220 ÷ 240 Vac					
Current	0,13 A	0,13 A	0,2 A	0,2 A	0,3 A	0,3 A
Device Power Protection	Full protection against reverse polarity					
Electrical Connection	M12	Cable	M12	Cable	M12	Cable
Insulation Class	Class I					
Efficiency Class	E (Integrated LED module - 116lm/W) compliant with UE LAW No. 2019/2020					

CONNECTION* with M12-4P Male A Coding

Male	Female	Pin	Connection
		1	L - 230 Vac
		2	GND
		3	N - 230 Vac
		4	Not Connected

CONNECTION with 3m Cable, Standard length

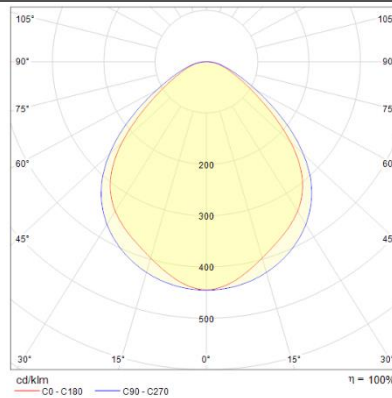
PUR 3G 0,75 mm ² L= 3 m	Conductor	Connection
	1 Black	L - 230 Vac
	2 Black	N - 230 Vac
	Yellow / Green	GND

OPTICAL FEATURES

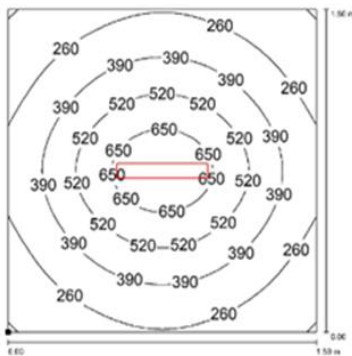
Model	N° and Type of LEDs	LED Lifespan	Light Color	CRI	Light Beam Angle	Luminous Flux	Efficiency
TA0322S01W	63 Mid Power LED	60.000 L70**	5000 K	80	120°	~ 2265 lm	91 lm/W
TA0322S02W	63 Mid Power LED	60.000 L70**	5000 K	80	120°	~ 2265 lm	91 lm/W
TA0522S01W	105 Mid Power LED	60.000 L70**	5000 K	80	120°	~ 3770 lm	91 lm/W
TA0522S02W	105 Mid Power LED	60.000 L70**	5000 K	80	120°	~ 3770 lm	91 lm/W
TA0822S01W	168 Mid Power LED	60.000 L70**	5000 K	80	120°	~ 6050 lm	91 lm/W
TA0822S02W	168 Mid Power LED	60.000 L70**	5000 K	80	120°	~ 6050 lm	91 lm/W

PHOTOMETRIC DIAGRAMS

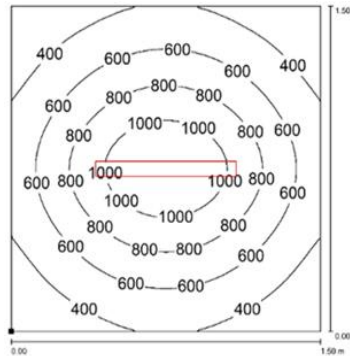
120° Flow beam



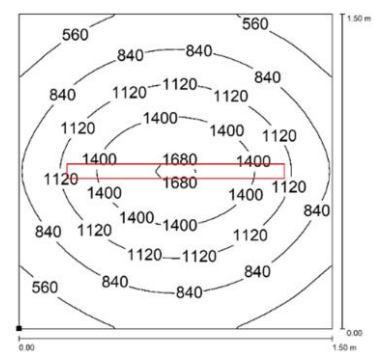
TA0322S01W / TA0322S02W



TA0522S01W / TA0522S02W



TA0822S01W / TA0822S02W



Distance graphic: 1m

PLUG OPTION M12 Cable Connector

Product pictures

Description




Code product



M12 4P (F) COD.A with cable L.5m

M12AFC5UL

MOUNTING OPTIONS

Product pictures	Description	Code product
	Robust, versatile and vibration resistant, it is a 90° angle adjustment bracket. Made stainless steel, it is the perfect solution when you need to adjust the direction of the flow beam in high-vibrating applications.	TAFX02
	Sturdy, flexible and vibration resistant, it is a 30° angle adjustment bracket. Made of anodized aluminum, it is the perfect solution when you need to retrofit an obsolete machine tools and machining centers.	TACLIP
	Strong magnetic disc made of neodymium. Use along with TAFX02 brackets when you need to move the light frequently and to different positions. Suitable to use in high-vibrating applications.	B03

ORDER CODES

Model	Description
TA0322S01W	TRACKALPHA PRO, 17.36"(441 mm), 120°, 25W, 230Vac, M12-A 4P Male
TA0322S02W	TRACKALPHA PRO, 17.36"(441 mm), 120°, 25W, 230Vac, Cable 10ft (3mt)
TA0522S01W	TRACKALPHA PRO, 26.81"(681 mm), 120°, 42W, 230Vac, M12-A 4P Male
TA0522S02W	TRACKALPHA PRO, 26.81"(681 mm), 120°, 42W, 230Vac, Cable 10ft (3mt)
TA0822S01W	TRACKALPHA PRO, 40.98"(1041 mm), 120°, 65W, 230Vac, M12-A 4P Male
TA0822S02W	TRACKALPHA PRO, 40.98"(1041 mm), 120°, 65W, 230Vac, Cable 10ft (3mt)
TAFX02	TRACKALPHA, stainless steel side brackets kit 90°
TACLIP	TRACKALPHA, rear mounting clips kit
B03	Magnet Diam 1.9" (48 mm)
M12AFC5UL	PRE-ASSEMBLED M12 4Pin, FEMALE, A Coding, CABLE 5mt, UL