

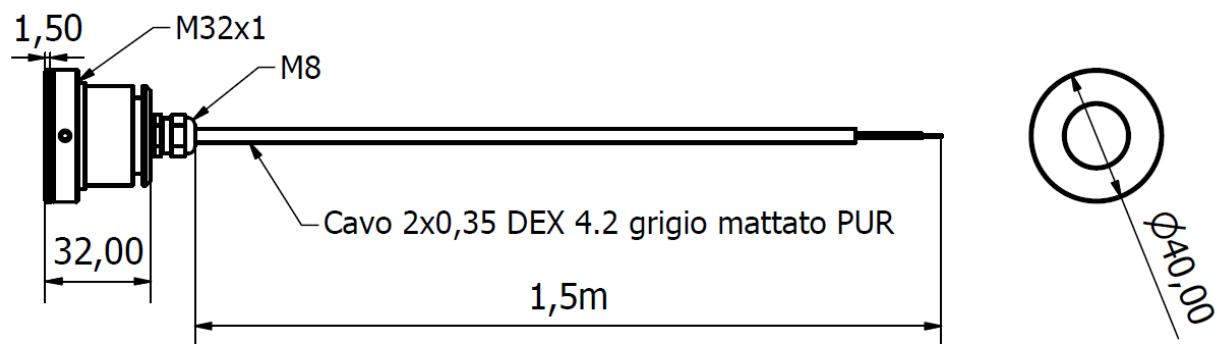


From the study of industrial machines comes the Tool P series, panel lamps with a very high degree of protection IP68. Built-in structure with self-locking fixing system with threaded ring nut. Available in three diameters to satisfy the most varied needs.

Light beam of 40° amplitude dedicated concentration lenses.

- Structure made entirely of anodized aluminum
- Maintenance-free thanks to high efficiency LED technology
- Light source 3 or 6 power LED
- Light color 5,000 K
- 24 Vdc power supply via M12-A 3P connector
- Optic 40° concentration lens
- External plug-in power supply available for 100 - 240 Vac power supply

DIMENSIONS



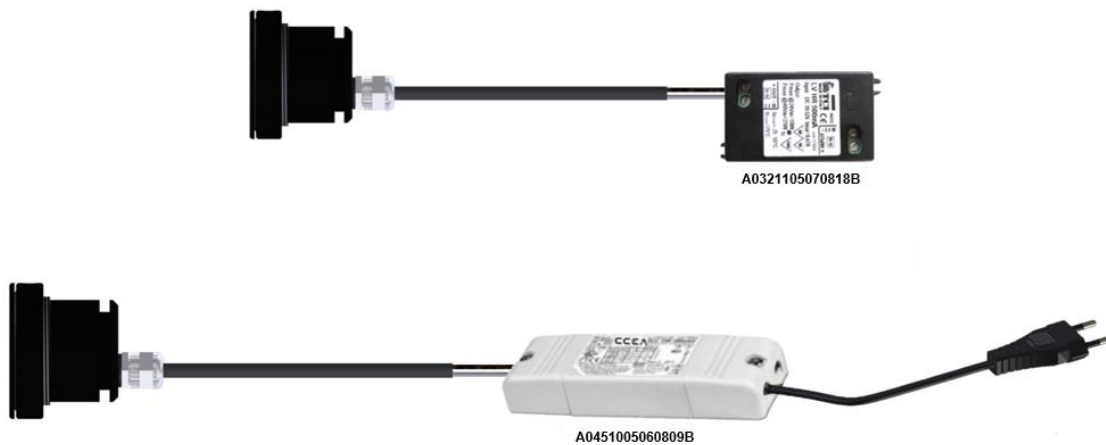
MECHANICAL FEATURES

Model	SR0121S01	SR0121S02	SR0122S01	SR0122S02
Casing Material	Anodized aluminum			
Side Caps	Anodized aluminum			
Surface Treatment	Standard: 10 microns of black aluminum solution oxidation			
Front Glass	0.16 in (4 mm). thick, extra clear tempered glass			
Weight (excluding accessories)	0,20 kg (~ 0.44 lb)			
Protection Index	IP68 compatibile con NEMA 6P			
Impact Resistance	1.00 N m/s			
Operating Temperature	-20 °C / + 45 °C			
Installation	Threaded ring nut M32 x1			

ELECTRICAL FEATURES

Model	SR0121S01	SR0121S02	SR0122S01	SR0122S02
Power Input	3W			
Power Supply	External Driver 24Vdc	External Driver 24Vdc	External Driver 230Vdc	External Driver 230Vdc
Current	700mA			
Device Power Protection	Protection against reverse polarity			
Electrical Connection	PUR cable grey 2x0,34mm	PUR cable grey 2x0,34mm	PUR cable grey 2x0,34mm	PUR cable grey 2x0,34mm
Insulation Class	Class III (SELV)			
Efficiency Class	F (Integrated LED module) in compliance with UE No. 2019/2020			

ELECTRICAL CONNECTION



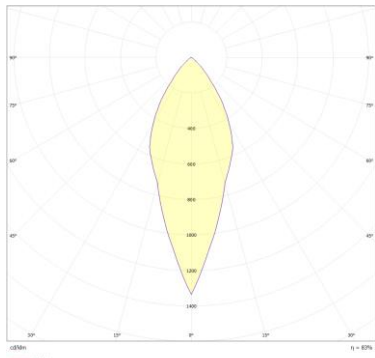
OPTICAL FEATURES

Model	N° and Type of LEDs	LED Lifespan	Light Color	CRI	Light Beam Angle	Luminous Flux	Efficiency
SR0121S01	1 Power LED	60 000 h L70 **	5,000 K	80	Lens 40°	115 lm	38.5 lm/W
SR0121S02	1 Power LED	60 000 h L70 **	5,000 K	80	Lens 40°	115 lm	38.5 lm/W
SR0122S01	1 Power LED	60 000 h L70 **	5,000 K	80	Lens 60°	115 lm	38.5 lm/W
SR0122S02	1 Power LED	60 000 h L70 **	5,000 K	80	Lens 60°	115 lm	38.5 lm/W

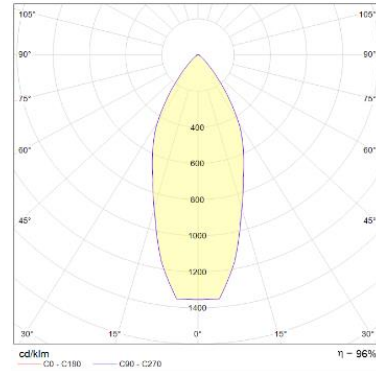
** Flow beam reduced by less than 30% after 60,000 hours

PHOTOMETRIC DIAGRAMS

40° lens



60° lens

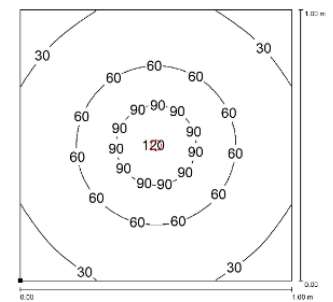
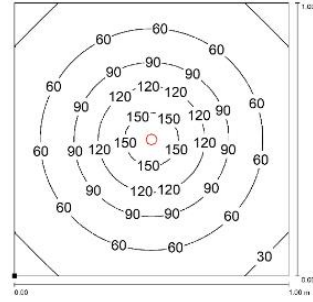
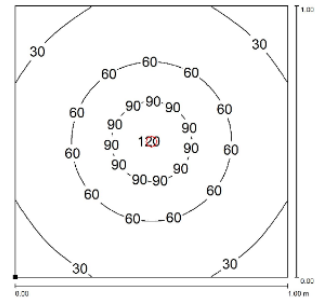
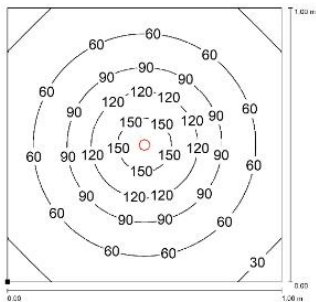


SR0121S01

SR0121S02



SR0122S01

SR0122S02



Altezza installazione: 1m

EXTERNAL POWER SUPPLY

Product picture	Description	Code product
	DRIVER 1+6 LED 700mA 10-52Vdc	A0321105070818B
	DRIVER 1+4 LED 700mA 100-240Vac	A0451005060809B

ORDER CODES

Model	Description
SR0121S01	P1 40° 3W 24VDC 1,5m
SR0121S02	P1 60° 3W 24VDC 1,5m
SR0122S01	P1 40° 3W 230VAC 1,5m
SR0122S02	P1 60° 3W 230VAC 1,5m

All the information gathered by this manual can be modified at any time without prior notice and do not imply any obligation by CCEA
SIRIO P1 Sales Summary 08/05/2023

North America
Europe

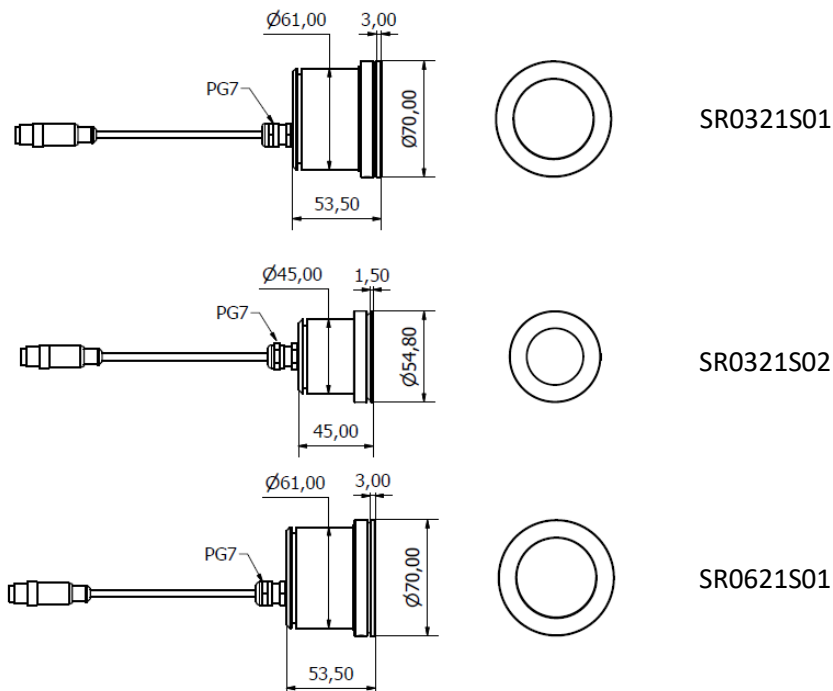
www.ccealights-usa.com
www.ccealights.com



From the study of industrial machines comes the Tool P series, panel lamps with a very high degree of protection IP68. Built-in structure with self-locking fixing system with threaded ring nut. Available in three diameters to satisfy the most varied needs. Light beam of 40° amplitude dedicated concentration lenses.

- Structure made entirely of anodized aluminum
- Maintenance-free thanks to high efficiency LED technology
- Light source 3 or 6 power LED
- Light color 5,000 K
- 24 Vdc power supply via M12-A 3P connector
- Optic 40° concentration lens
- External plug-in power supply available for 100 - 240 Vac power supply

DIMENSIONS



MECHANICAL FEATURES

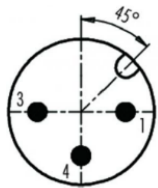
Model	SR0321S01	SR0321S02	SR0621S01
Casing Material	Anodized aluminum		
Side Caps	Anodized aluminum		
Surface Treatment	Standard: 10 microns of black aluminum solution oxidation		
Front Glass	0.16 in (4 mm), thick, extra clear tempered glass		
Weight (excluding accessories)	~ 0.99 lb 0,45 kg	~ 0.44 lb 0,20 kg	~ 0.99 lb 0,45 kg
Protection Index	IP68		
Impact Resistance	1.00 N m/s	1.00 N m/s	1.00 N m/s
Operating Temperature	-20 °C / + 45 °C		
Installation	Threaded ring nut M63 x1	Threaded ring nut M47 x 1	Threaded ring nut M63 x1

ELECTRICAL FEATURES

Model	SR0321S01	SR0321S02	SR0621S01
Power Input	6 W (@500mA)	6 W (@500mA)	12 W (@500mA)
Power Supply	24 Vdc		
Current	0,25 A	0,25 A	0,40 A
Device Power Protection	Protection against reverse polarity		
Electrical Connection	M12 A Coding 3P with cable L. 9.84 ft (3 m)		
Insulation Class	Class III (SELV)		
Efficiency Class	A/A+/A++/A+++ (Integrated LED module) compliant with UE Law No. 874/2012		

ELECTRICAL CONNECTION

PUR 2x 0.34 mm² L= 3 m



Pin

Connection

1

+ 24 Vdc

3

0 Vdc

4

Not connected

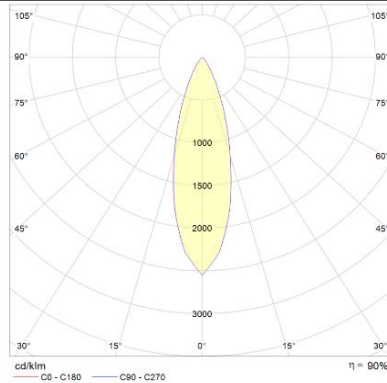
OPTICAL FEATURES

Model	N° and Type of LEDs	LED Lifespan	Light Color	CRI	Light Beam Angle	Luminous Flux	Efficiency
SR0321S01	3 Power LED	60 000 h L70 **	5,000 K	80	40° Optics	~ 400 lm	~ 67 lm/W
SR0321S02	3 Power LED	60 000 h L70 **	5,000 K	80	40° Optics	~ 400 lm DIM	~ 67 lm/W
SR0621S01	6 Power LED	60 000 h L70 **	5,000 K	80	40° Optics	~ 630 lm	~ 53 lm/W

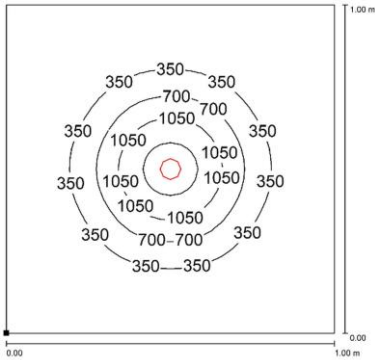
** Flow beam reduced by less than 30% after 60,000 hours

PHOTOMETRIC DIAGRAMS

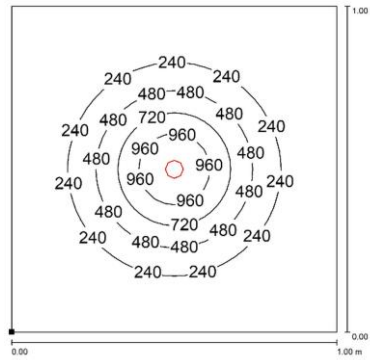
40° Optics



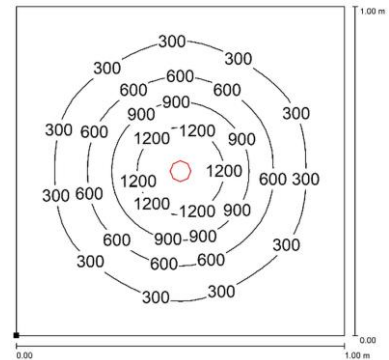
SR0321S01



SR0321S02



SR0621S01



Distance graphic: 1m

EXTERNAL AC/DC CONVERTER 100 – 240 VaC

Product picture

Description

Code product



AC/DC 100-240Vac/24Vdc 18W

SR23018W

ORDER CODES

Model

Description

SR0321S01 P3, Ø2.48"(63mm), 40°, 6W, 24Vdc, Cable 10ft(3m) with M12-A 3P Male

SR0321S02 P35, Ø1.85"(47mm), 40°, 6W, 24Vdc, Cable 10ft(3m) with M12-A 3P Male

SR0621S01 P6, Ø2.48"(63mm), 40°, 12W, 24Vdc, Cable 10ft(3m) with M12-A 3P Male