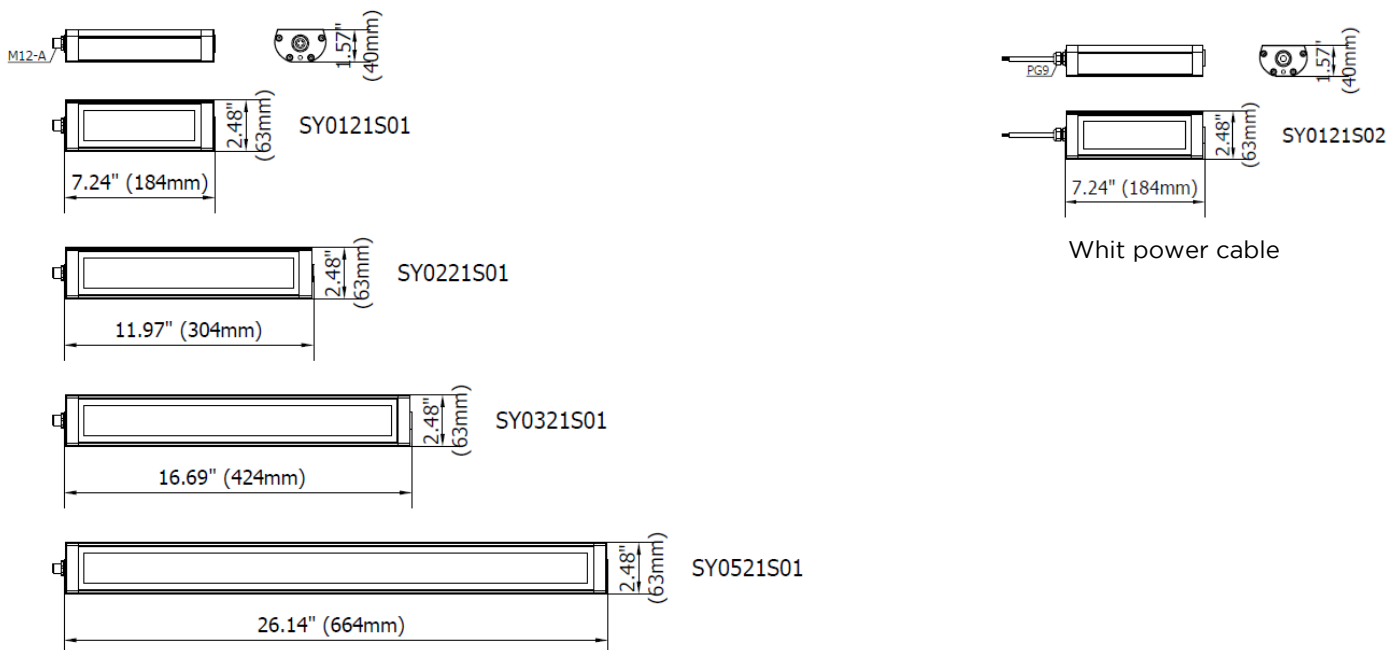




LED lighting system for beverage sector, agro-industry, filling machines, presses, CNC. Lamp with sturdy anodized aluminum structure and 0.2 in (5 mm) tempered glass. Mini Power LED with Integrated Driver System (IDS). Homogeneous white light with high CRI. Adjustable flow beam angle and easy to install. Direct 24 Vdc power supply.

- Extra-slim housing made of aluminum alloy
- 4 sizes from 7.24 in (3184 mm) to 26.14 in (664 mm)
- High grade of protection IP69 (with cable) / IP67 (with M12 connector)
- Protection from reverse polarity
- Operating temperature from -4°F to 113°F (-20°C to + 45°C)
- LED lifespan > 60,000 h (L 70)
- Light color 5,000 K - CRI 80
- 24 Vdc via M12 or 10ft. (3m) Cable for more flexibility
- Class III IEC

DIMENSIONS



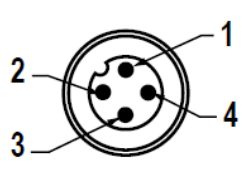
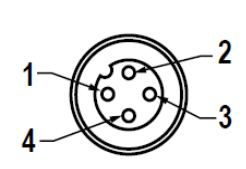
MECHANICAL FEATURES

| Model | SY0121S01 | SY0121S02 | SY0221S01 | SY0221S02 | SY0321S01 | SY0321S02 | SY0521S01 | SY0521S02 |
|---------------------------------------|--|--------------------------------------|--------------------------------------|--------------------------------------|--------------------------------------|--------------------------------------|--------------------------------------|--------------------------------------|
| Casing Material | Anodized extruded aluminum | | | | | | | |
| Side Caps | Anodized aluminum | | | | | | | |
| Surface Treatment | Standard: 10 microns of natural aluminum solution oxidation | | | | | | | |
| Front Glass | Extra clear tempered 0.20 in (5 mm) thick frosted glass IK06 | | | | | | | |
| Weight (excluding accessories) | ~1.21 lb 0.55 kg | ~1.59 lb 0.75 kg | ~1.92 lb 0.9 kg | ~2.43 lb 1.10 kg | ~2.43 lb 1.10 kg | ~2.87 lb 1.30 kg | ~4.01 lb 1.85 kg | ~4.52 lb 2.05 kg |
| Protection Index | IP67 Compatible with NEMA Type 12 | IP69 Compatible with NEMA Type 12 | IP67 Compatible with NEMA Type 12 | IP69 Compatible with NEMA Type 12 | IP67 Compatible with NEMA Type 12 | IP69 Compatible with NEMA Type 12 | IP67 Compatible with NEMA Type 12 | IP69 Compatible with NEMA Type 12 |
| Impact Resistance | 1.00 N m/s | | | | | | | |
| Operating Temperature | -4°F (-20°C) to +113°F (+ 45°C) | | | | | | | |
| Installation | SYFY01 Stainless steel side brackets / Magnet B07 | | | | | | | |

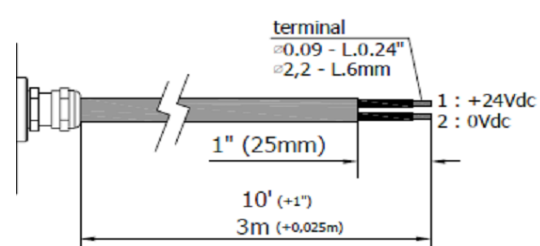
ELECTRICAL FEATURES

| Model | SY0121S01 | SY0121S02 | SY0221S01 | SY0221S02 | SY0321S01 | SY0321S02 | SY0521S01 | SY0521S02 |
|--------------------------------|--|-----------|-----------------|-----------|-----------------|-----------|-----------------|-----------|
| Power Input | 6.5 W | | 13 W | | 19.5 W | | 32.5 W | |
| Power Supply | 21±36 Vdc | | | | | | | |
| Current | 0.28 A @ 24 Vdc | | 0.56 A @ 24 Vdc | | 0.85 A @ 24 Vdc | | 1.35 A @ 24 Vdc | |
| Device Power Protection | Full protection against reverse polarity | | | | | | | |
| Electrical Connection | M12 | Cable | M12 | Cable | M12 | Cable | M12 | Cable |
| Insulation Class | Class III (SELV) | | | | | | | |
| Efficiency Class | A/A+/A++/A+++ (Integrated LED module) compliant with UE Law No. 874/2012 | | | | | | | |

CONNECTION* with M12-4P Male A Coding

| Male | Female | Pin | Connection |
|---|---|-----|---------------|
|  |  | 1 | +24 Vdc |
| | | 2 | Not Connected |
| | | 3 | 0 Vdc |
| | | 4 | Not Connected |

CONNECTION* with 10 ft. (3m) Cable, Standard length

| PVC 2x 0.17 in ² (0.75 mm ²) L= 10 ft. (3m) | Conductor | Connection |
|---|-----------|------------|
|  | 1 Black | +24 Vdc |
| | 2 Black | 0 Vdc |

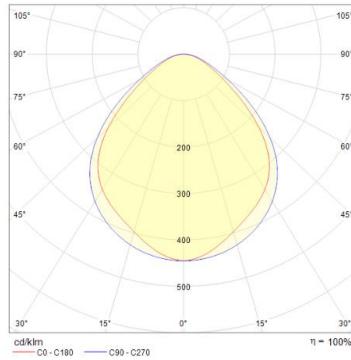
OPTICAL FEATURES

| Model | N° and Type of LEDs | LED Lifespan | Light Color | CRI | Light Beam Angle | Luminous Flux | Efficiency |
|------------------|---------------------|--------------------|-------------|-----|------------------|---------------|------------|
| SY0121S01 | 21 Mid Power LED | 60 000 h L70 ** | 5,000 K | 80 | Diffuse 120° | ~ 650 lm | ~ 100 lm/W |
| SY0121S02 | 21 Mid Power LED | 60 000 h L70 ** | 5,000 K | 80 | Diffuse 120° | ~ 650 lm | ~ 100 lm/W |
| SY0221S01 | 42 Mid Power LED | 60 000 h L70 ** | 5,000 K | 80 | Diffuse 120° | ~ 1,300 lm | ~ 100 lm/W |
| SY0221S02 | 42 Mid Power LED | 60 000 h L70 ** | 5,000 K | 80 | Diffuse 120° | ~ 1,300 lm | ~ 100 lm/W |
| SY0321S01 | 63 Mid Power LED | 60 000 h L70 ** | 5,000 K | 80 | Diffuse 120° | ~ 1,950 lm | ~ 100 lm/W |
| SY0321S02 | 63 Mid Power LED | 60 000 h L70 ** | 5,000 K | 80 | Diffuse 120° | ~ 1,950 lm | ~ 100 lm/W |
| SY0521S01 | 105 Mid Power LED | 60 000 h L70 ** | 5,000 K | 80 | Diffuse 120° | ~ 3,250 lm | ~ 100 lm/W |
| SY0521S02 | 105 Mid Power LED | 60 000 h L70 ** | 5,000 K | 80 | Diffuse 120° | ~ 3,250 lm | ~ 100 lm/W |

** Flux beam reduced by less than 30% after 60 000 hours

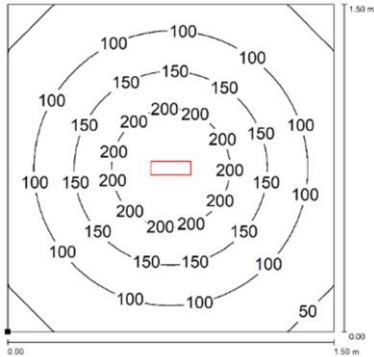
PHOTOMETRIC DIAGRAMS

120° Flow beam

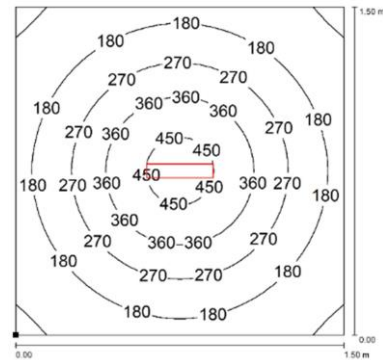


SY0121S01
SY0121S02

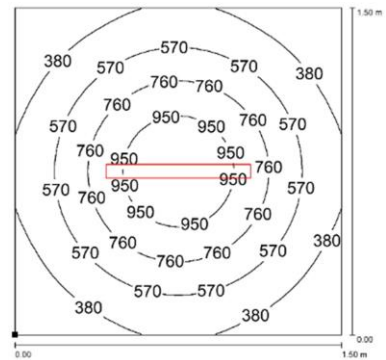
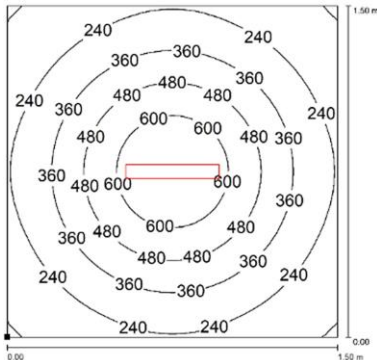
SY0221S01
SY0221S02



SY0321S01
SY0321S02




SY0521S01
SY0521S02





Distance graphic: 1m

PLUG OPTION M12 Cable Connector

| Product pictures | Description | Code product |
|---|---|--------------|
|  | M12 4P (F) COD.A with cable L.16ft (5m) | M12AFC5 |

MOUNTING OPTIONS

| Product pictures | Description | Code product |
|---|--|--------------|
|  | Robust, versatile and vibration resistant, it is a 100° angle adjustment bracket. Made of stainless steel, it is the perfect solution when you need to adjust the direction of the flow beam in high-vibrating applications. | SYFX01 |
|  | Strong magnetic disc made of neodymium and high grip. Use along with SYFX01 brackets when you need to move the light frequently and to different positions. Suitable to use in high-vibrating applications. | B03 |

ORDER CODES

| Model | Description |
|------------------|---|
| SY0121S01 | SYRMA, 7.25"(184mm), 120°, 6.5W, 24Vdc, M12-A 4P Male |
| SY0121S02 | SYRMA, 7.25"(184mm), 120°, 6.5W, 24Vdc, Cable 10ft(3m) |
| SY0221S01 | SYRMA, 11.97"(304mm), 120°, 13W, 24Vdc, M12-A 4P Male |
| SY0221S02 | SYRMA, 11.97"(304mm), 120°, 13W, 24Vdc Cable 10ft(3m) |
| SY0321S01 | SYRMA, 16.69"(424mm), 120°, 19.5W, 24Vdc, M12-A 4P Male |
| SY0321S02 | SYRMA, 16.69"(424mm), 120°, 19.5W, 24Vdc, Cable 10ft(3m) |
| SY0521S01 | SYRMA, 26.14"(664mm), 120°, 32.5W, 24Vdc, M12-A 4P Male |
| SY0521S02 | SYRMA, 26.14"(664mm), 120°, 32.5W, 24Vdc, Cable 10ft(3m) |
| SYFX01 | SYRMA, chrome-plated stainless steel side brackets kit 100° |
| B03 | Magnet Diam 1.9" (48 mm) |
| M12AFC5 | PRE-ASSEMBLED M12 4Pin, FEMALE, A Coding, CABLE 5mt |