

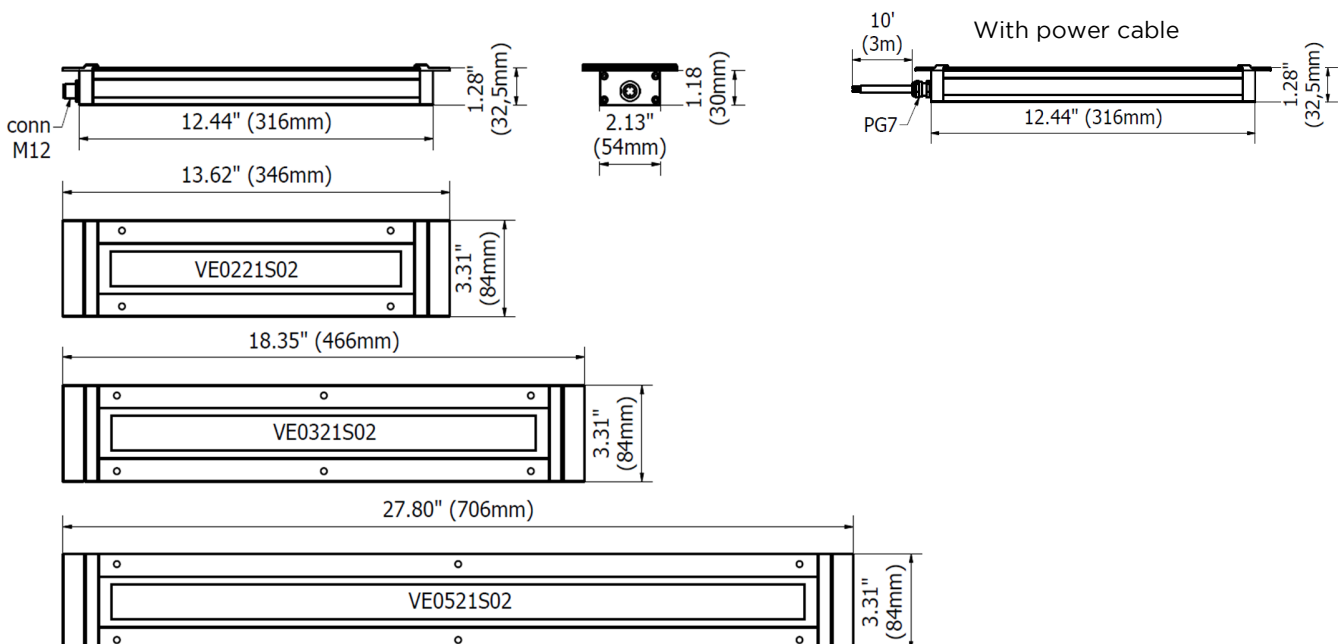


Used in different working environments.

The VEGA is a recessed lamp, an ideal solution for use in small spaces inside medium and large CNC. The exceptional brightness is due to the highly efficient Mid Power LEDs, which provide a homogeneous light of 5,000 K. The extra slim structure with a high degree of protection IP67/IP69 resists the strongest mechanical stresses and does not cause clutter inside the machines. Available in 13.5 W, 19.5 W and 32.5 W variants.

- Extra-slim housing made of aluminum alloy
- 3 sizes from 13.62 in (346 mm) to 27.80 in (706 mm)
- Recessed mount light
- High grade of protection IP69 (with cable) / IP67 (with M12 connector)
- Protection from reverse polarity
- Operating temperature from -4°F to 113°F (-20°C to + 55°C)
- LED lifespan > 60,000 h (L 70)
- Light color 5,000 K - CRI 80
- 24 Vdc via M12 or 10ft. (3m) Cable for more flexibility
- Class III IEC
- Approval: cURus in compliance with UL2108 / CSA / CE

## DIMENSIONS



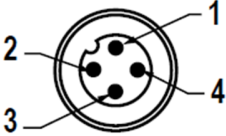
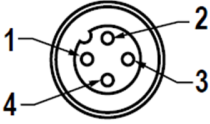
## MECHANICAL FEATURES

Model	VE0221S01	VE0221S02	VE0321S01	VE0321S02	VE0521S01	VE0521S02
<b>Casing Material</b>	Anodized extruded aluminum					
<b>Side Caps</b>	Anodized aluminum					
<b>Surface Treatment</b>	Standard: 10 microns of natural aluminum solution oxidation					
<b>Front Glass</b>	0.16 in (4 mm). thick, extra clear tempered screen-printed glass					
<b>Weight (excluding accessories)</b>	-2.20 lb 1.00 kg	-1.98 lb 0.90 kg	-2.65 lb 1.20 kg	-2.43 lb 1.10 kg	-3.86 lb 1.75 kg	-3.64 lb 1.65 kg
<b>Protection Index</b>	IP69 Compatible with NEMA Type 12	IP67 Compatible with NEMA Type 12	IP69 Compatible with NEMA Type 12	IP67 Compatible with NEMA Type 12	IP69 Compatible with NEMA Type 12	IP67 Compatible with NEMA Type 12
<b>Impact Resistance</b>	1.00 N m/s	1.00 N m/s	1.00 N m/s	1.00 N m/s	1.00 N m/s	1.00 N m/s
<b>Operating Temperature</b>	-4°F (-20°C) to +113°F (+ 45°C)					
<b>Installation</b>	Screw 8-32 or (M5)					

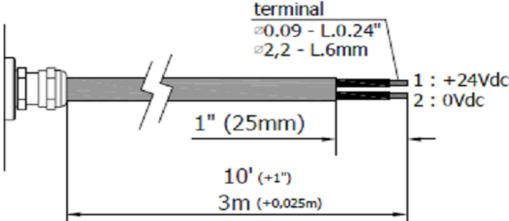
## ELECTRICAL FEATURES

Model	VE0221S01	VE0221S02	VE0321S01	VE0321S02	VE0521S01	VE0521S02
<b>Power Input</b>	13 W		19.5 W		32.5 W	
<b>Power Supply</b>	21±36 Vdc					
<b>Current</b>	0.56 A @ 24 Vdc		0.85 A @ 24 Vdc		1.35 A @ 24 Vdc	
<b>Device Power Protection</b>	Full protection against reverse polarity					
<b>Electrical Connection</b>	Cable	M12	Cable	M12	Cable	M12
<b>Insulation Class</b>	Class III (SELV)					
<b>Efficiency Class</b>	A/A+/A++/A+++ (Integrated LED module) compliant with UE Law No. 874/2012					

## CONNECTION\* with M12-4P Male A Coding

Male	Female	Pin	Connection
		1	+24 Vdc
		2	Not Connected
		3	0 Vdc
		4	Not Connected

## CONNECTION\* with 10 ft. (3m) Cable, Standard length

PVC 2x 0.17 in <sup>2</sup> (0.75 mm <sup>2</sup> ) L= 10 ft. (3 m)	Conductor	Connection
	1 Black	+24 Vdc
	2 Black	0 Vdc

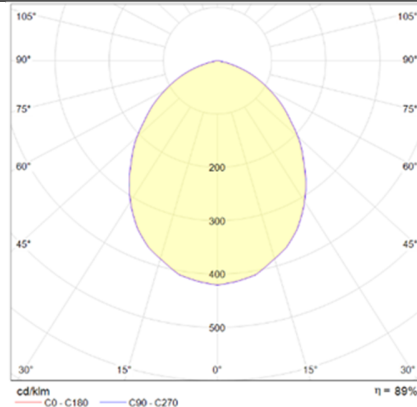
## OPTICAL FEATURES

Model	N° and Type of LEDs	LED Lifespan	Light Color	CRI	Light Beam Angle	Luminous Flux	Efficiency
VE0221S01	42 Mid Power LED	60 000 h L70 **	5,000 K	80	Diffuse 120°	~ 1,300 lm	~ 100 lm/W
VE0221S02	42 Mid Power LED	60 000 h L70 **	5,000 K	80	Diffuse 120°	~ 1,300 lm	~ 100 lm/W
VE0321S01	63 Mid Power LED	60 000 h L70 **	5,000 K	80	Diffuse 120°	~ 2,000 lm	~ 102 lm/W
VE0321S02	63 Mid Power LED	60 000 h L70 **	5,000 K	80	Diffuse 120°	~ 2,000 lm	~ 102 lm/W
VE0521S01	105 Mid Power LED	60 000 h L70 **	5,000 K	80	Diffuse 120°	~ 3,300 lm	~ 101 lm/W
VE0521S02	105 Mid Power LED	60 000 h L70 **	5,000 K	80	Diffuse 120°	~ 3,300 lm	~ 101 lm/W

\*\* Flow beam reduced by less than 30% after 60,000 hours

## PHOTOMETRIC DIAGRAMS

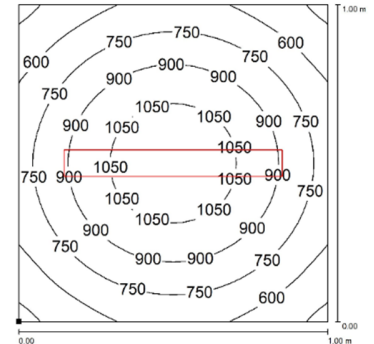
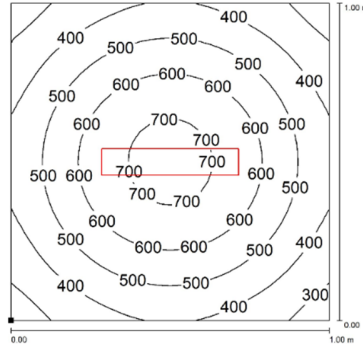
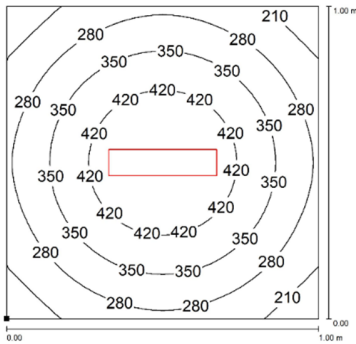
120° Flow beam



VE0221S01  
VE0221S02


VE0321S01  
VE0321S02

VE0521S01  
VE0521S02



Distance graphic: 1m

## PLUG OPTION M12 Cable Connector

Product pictures	Description	Code product
	M12 4P (F) COD.A with cable L.16ft (5m)	M12AFC5UL

## ORDER CODES

Model	Description
<b>VE0221S01</b>	VEGA, 13.62"(346mm), 120°, 13W, 24Vdc, CABLE 10ft(3m)
<b>VE0221S02</b>	VEGA, 13.62"(346mm), 120°, 13W, 24Vdc, M12-A 4P Male
<b>VE0321S01</b>	VEGA, 18.35"(466mm), 120°, 19.5W, 24Vdc, CABLE 10ft(3m)
<b>VE0321S02</b>	VEGA, 18.35"(466mm), 120°, 19.5W, 24Vdc, M12-A 4P Male
<b>VE0521S01</b>	VEGA, 27.80"(706mm), 120°, 32.5W, 24Vdc, CABLE 10ft(3m)
<b>VE0521S02</b>	VEGA, 27.80"(706mm), 120°, 32.5W, 24Vdc, M12-A 4P Male
<b>M12AFC5UL</b>	PRE-ASSEMBLED M12 4Pin, FEMALE, A Coding, CABLE 5mt, UL