

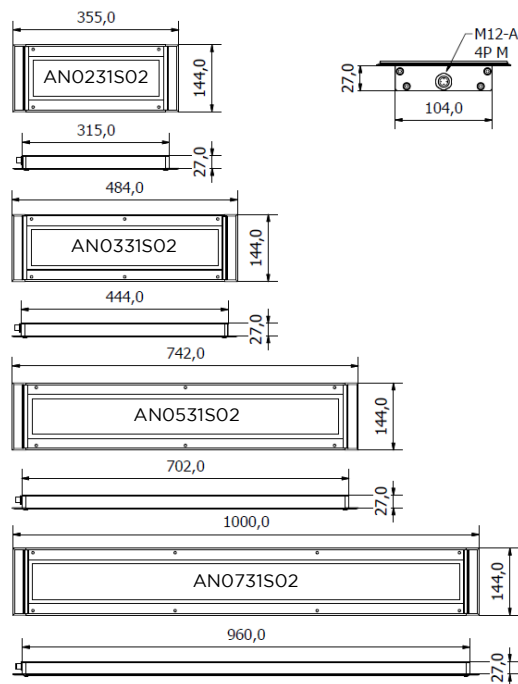


State-of-the art LED technology inside a robust aluminum housing. Machine Tool Debris and liquidproof structure. Resistant at vibrations.

Lighting system particularly suitable for industrial applications, automation processes, medium and large size CNC machines. Front tempered diffusing glass 4mm thickness IK06 impact tested.

- Structure entirely made of aluminum
- Depth 27 mm
- 4 sizes from 13.98 in/(355mm) to 39.37 in/(1000 mm) in length
- Recessed mount
- Vibration-resistant up to 55Hz
- 4 mm thick, IK06 impact-resistant, tempered front glass
- IP67 Protection Index
- Suitable for wet locations
- Operating temperature from -20° to + 45° C
- 120° diffused light beam angle
- LED lifespan (L 70) > 60 000 h
- Light color 6500 K - CRI 80
- Power Supply 24 VDC via M12 connector
- Class III IEC
- Approval: cURus in compliance with UL2108 / CSA / CE

## DIMENSIONS (mm)



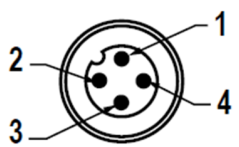
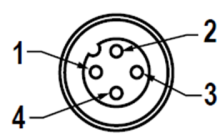
## MECHANICAL FEATURES

Model	AN0231S02	AN0331S02	AN0531S02	AN0721S02
<b>Casing Material</b>	Extruded aluminum			
<b>Side Enclosers</b>	Extruded aluminum			
<b>Surface Treatment</b>	Standard: 10 microns of natural aluminum solution oxidation			
<b>Front Glass</b>	Extra clear transparent tempered 4 mm thick glass			
<b>Weight</b>	~ 1,40 kg	~ 2,10 kg	~ 3,30 kg	~ 4,30 kg
<b>Protection Index</b>	IP67			
<b>Impact Resistance</b>	1,00 N m/s			
<b>Operating Temperature</b>	-20 °C to + 45 °C			
<b>Installation</b>	N° 4 M5 screws	N° 6 M5 screws	N° 6 M5 screws	N° 8 M5 screws

## ELECTRICAL FEATURES

Model	AN0231S02	AN0331S02	AN0531S02	AN0721S02
<b>Power usage</b>	26,5 W	40 W	66,5 W	93 W
<b>Power Supply</b>	22 ÷ 36 Vdc			
<b>Device Power Protection</b>	Full protection against reverse polarity			
<b>Electrical Connection</b>	M12 connector	M12 connector	M12 connector	M12 connector
<b>Insulation Class</b>	Class III (SELV)			
<b>Efficiency Class</b>	A/A+/A++/A+++ (Integrated LED module) compliant with UE Law No. 874/2012			

## CONNECTION with M12-4P Male A Coding

Male	Female	Pin	Connection
		1	+ 24 Vdc
		2	Not Connected
		3	0 Vdc
		4	Not Connected

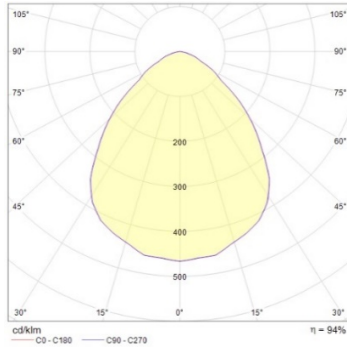
## OPTICAL FEATURES

Model	N° and Type of LEDs	LED Lifespan	Light Color	CRI	Light Beam Angle	Luminous Flux	Efficiency
AN0231S02	70 Mid Power LED	60.000 L70*	6500 K	80	120 °	2400 lm	91 lm/W
AN0331S02	105 Mid Power LED	60.000 L70*	6500 K	80	120 °	3600 lm	90 lm/W
AN0531S02	175 Mid Power LED	60.000 L70*	6500 K	80	120 °	6150 lm	92 lm/W
AN0731S02	245 Mid Power LED	60.000 L70*	6500 K	80	120 °	8300 lm	89 lm/W

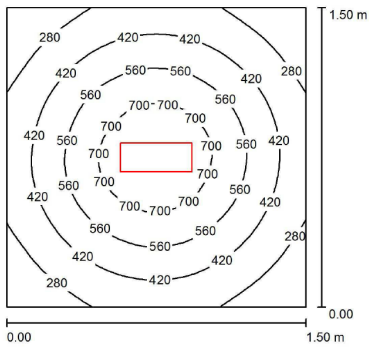
\* Flow beam reduced by less than 30% after 60.000 hours

# PHOTOMETRIC DIAGRAMS

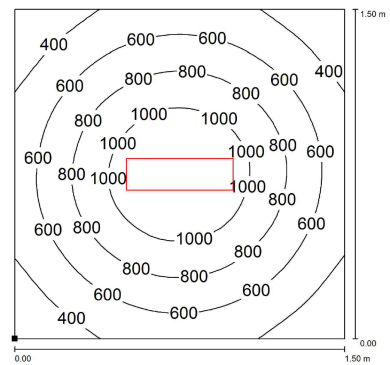
## 120° Flow beam



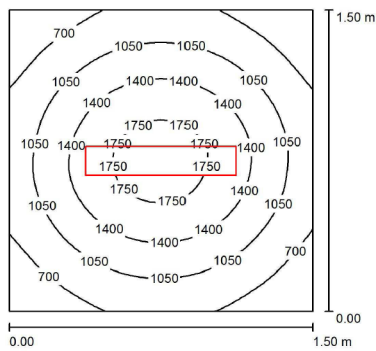
ANO231S02



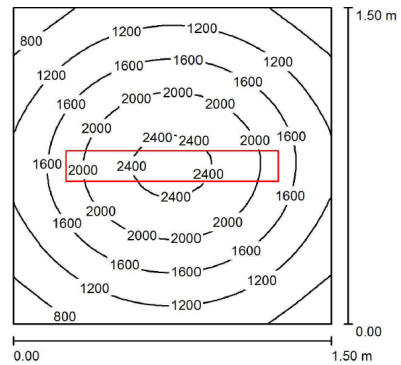
ANO331S02



ANO531S02



ANO731S02



## ORDER CODES

Model	Description
ANO231S02	Antario 355mm 26.5w 24vdc M12-A Cod.
ANO331S02	Antario 484mm 40w 24vdc M12-A Cod.
ANO531S02	Antario 742mm 66.5w 24vdc M12-A Cod.
ANO731S02	Antario 1000mm 93w 24vdc M12-A Cod.

All the information gathered by this manual can be modified at any time without prior notice and do not imply any obligation by CCEA  
 ANTARIO NEW - Sales Summary 30.04.2024 rev01

North America  
 Europe

[www.ccealights-usa.com](http://www.ccealights-usa.com)  
[www.ccealights.com](http://www.ccealights.com)