

Le lampade **TEIDE POWER Q** e **TEIDE ECO** sono state progettate per essere installate in quadri elettrici e usi industriali in genere.

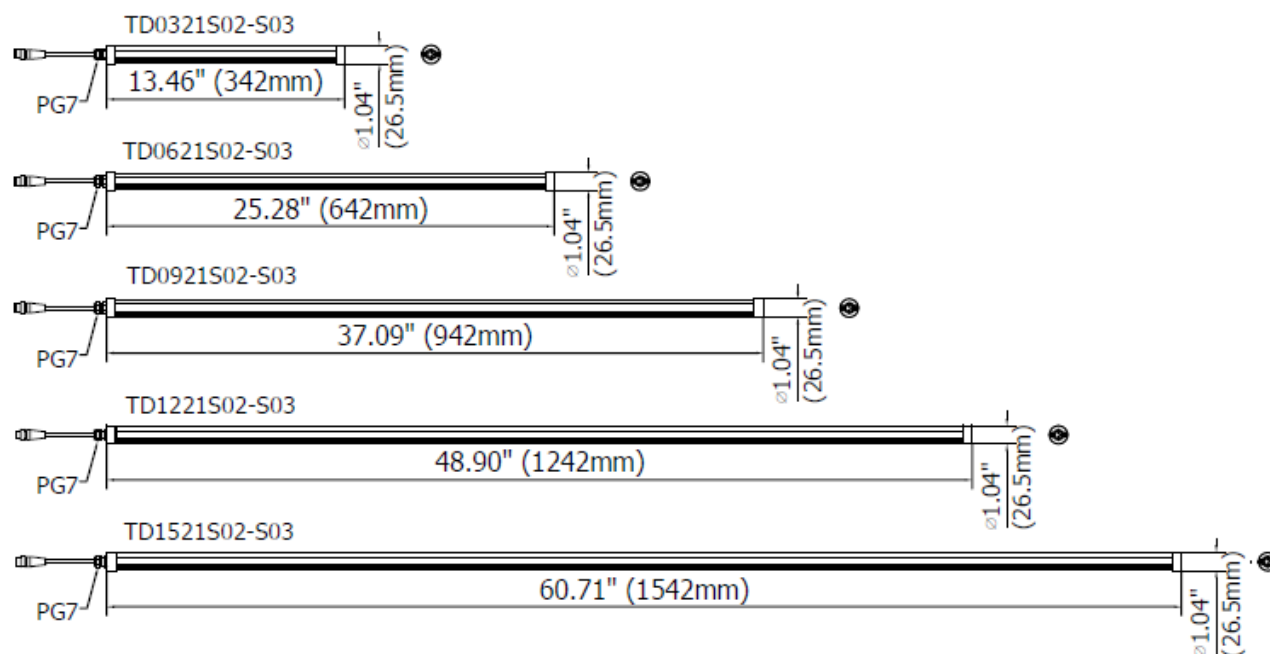
Grazie a un diametro di soli 24 mm, si installano in un'istante con le clip di fissaggio. La struttura è in robusto profilo di alluminio, con una robusta protezione frontale in Policarbonato opalino, che garantisce un flusso luminoso sorprendentemente omogeneo.

Fornita in lunghezze da 342 a 1542 mm, TEIDE POWER Q e TEIDE ECO offrono una buona protezione contro polvere e spruzzi d'acqua (IP54) e si differenziano per i due livelli di potenza.

I diodi LED di ultima generazione garantiscono una vita utile lunghissima, mentre il cavo con connettore M12 rende la connessione sicura e veloce.

- Struttura in alluminio anodizzato
- Copertura in policarbonato opaco o PMMA acrilico trasparente
- Cinque versioni disponibili da 5 a 50 W
- Ampiezza fascio di luce a 120 ° per un'illuminazione ampia e intensa
- Alimentazione diretta a 24 Vdc con cavo e connettore M12
- Colore luce 5000 K - CRI 80

DIMENSIONI



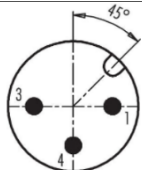
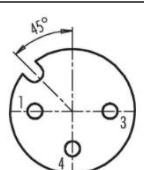
CARATTERISTICHE MECCANICHE

Modello	TD0321 S02	TD0321 S03	TD0621 S02	TD0621 S03	TD0921 S02	TD0921 S03	TD1221 S02	TD1221 S03	TD1521 S02	TD1521 S03
Struttura	Alluminio estruso anodizzato									
Tappi laterali	Acciaio inox AISI 304									
Finitura lampada	Standard: ossidazione alluminio naturale 10 microns									
Protezione frontale	PC opalino	PC opalino	PC opalino	PC opalino	PC opalino	PC opalino	PC opalino	PC opalino	PC opalino	PC opalino
Peso	0,35 kg	0,35 kg	0,50 kg	0,50 kg	0,7 kg	0,7 kg	1,00 kg	1,00 kg	1,30 kg	1,30 kg
Indice di protezione	IP54	IP54	IP54	IP54	IP54	IP54	IP54	IP54	IP54	IP54
Resistenza all'impatto	1,00 N m/s									
Temperatura operativa	-20 °C / + 45 °C									
Installazione	CLIP24									

CARATTERISTICHE ELETTRICHE

Modello	TD0321 S02	TD0321 S03	TD0621 S02	TD0621 S03	TD0921 S02	TD0921 S03	TD1221 S02	TD1221 S03	TD1521 S02	TD1521 S03
Potenza	10 W	5 W	20 W	10 W	30 W	15 W	40 W	20 W	50 W	25 W
Alimentazione	22-26 Vdc									
Corrente	0,45 A	0,25 A	0,90 A	0,50 A	1,35 A	0,75 A	1,80 A	1,00 A	2,25 A	1,25 A
Connessione elettrica	Connettore M12 con cavo L. 3 m									
Classe isolamento	Class III (SELV)									
Classe energetica	E (modulo LED integrato) conforme con regolamento UE No. 2019/2020									

CONNESSIONE ELETTRICA con connettore M12-3P Maschio cod.A

Maschio	Femmina	Pin	Collegamento
		1	+24 Vdc
		3	0 Vdc
		4	Non connesso

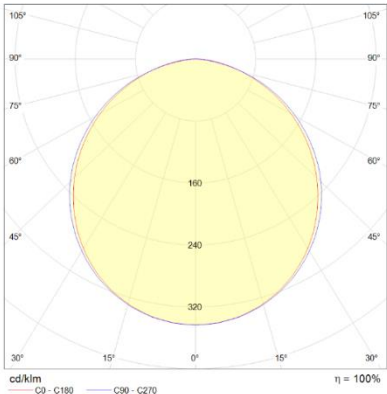
CARATTERISTICHE OTTICHE

Modello	N° e tipo di LED	Durata del LED	Colore luce	CRI	Angolo fascio luce	Flusso luminoso	Efficienza
TD0321S02	21 Mid Power LED	60 000 h L70 **	5000 K	80	120°	800 lm	80 lm/W
TD0321S03	21 Mid Power LED	60 000 h L70 **	5000 K	80	120°	400 lm	80 lm/W
TD0621S02	42 Mid Power LED	60 000 h L70 **	5000 K	80	120°	1600 lm	80 lm/W
TD0621S03	42 Mid Power LED	60 000 h L70 **	5000 K	80	120°	800 lm	80 lm/W
TD0921S02	63 Mid Power LED	60 000 h L70 **	5000 K	80	120°	2400 lm	80 lm/W
TD0921S03	63 Mid Power LED	60 000 h L70 **	5000 K	80	120°	1200 lm	80 lm/W
TD1221S02	84 Mid Power LED	60 000 h L70 **	5000 K	80	120°	3200 lm	80 lm/W
TD1221S03	84 Mid Power LED	60 000 h L70 **	5000 K	80	120°	1600 lm	80 lm/W
TD1521S02	105 Mid Power LED	60 000 h L70 **	5000 K	80	120°	4000 lm	80 lm/W
TD1521S03	105 Mid Power LED	60 000 h L70 **	5000 K	80	120°	2000 lm	80 lm/W

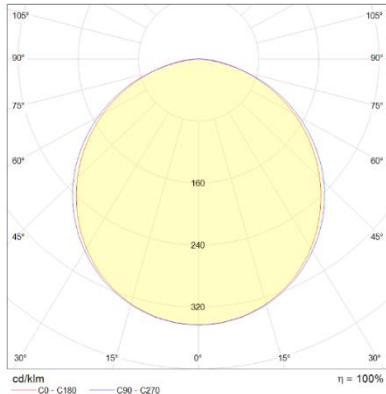
** Il flusso luminoso non scende oltre 30% fino a 60.000 di funzionamento

CURVA FOTOMETRICA E ISOLINEE

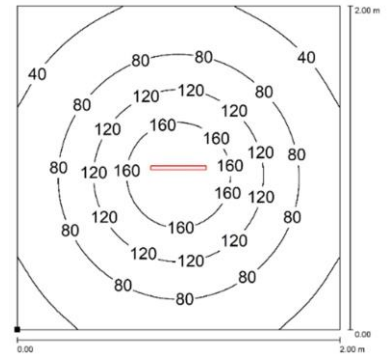
TDXX21S02 curva fotometrica



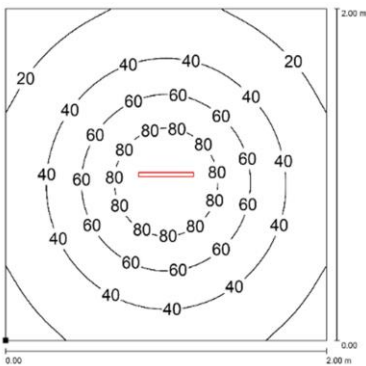
TDXX21S03 curva fotometrica



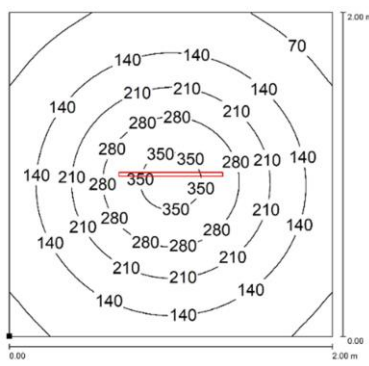
TD0321S02



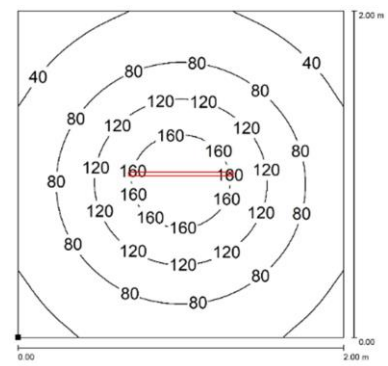
TD0321S03



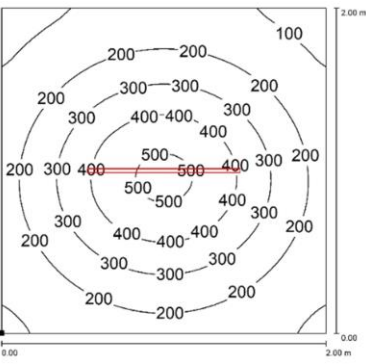
TD0621S02



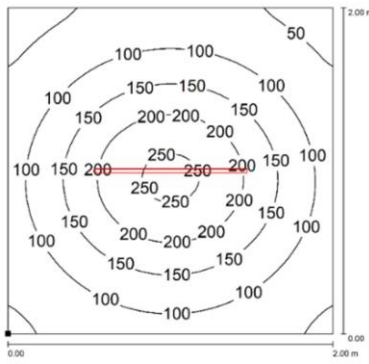
TD0621S03



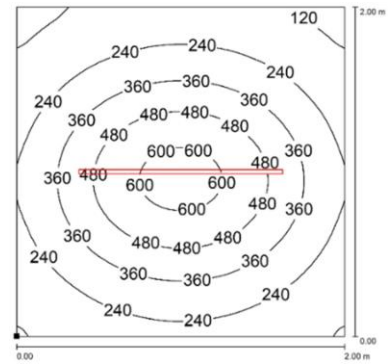
TD0921S02



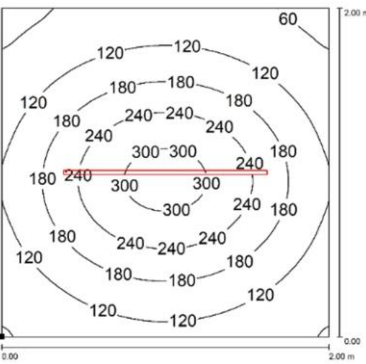
TD0921S03



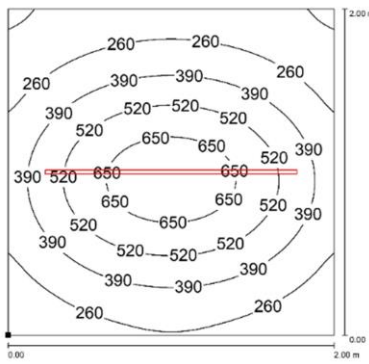
TD1221S02



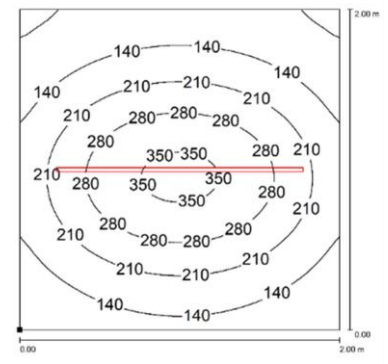
TD1221S03




TD1521S02



TD1521S03



ACCESSORI DI FISSAGGIO

Immagini	Descrizione	Codice
	Clips in acciaio per tubo Ø 24÷30 mm; consentono di agganciare la lampada e regolare la direzione del fascio luminoso	CLIP24

CODICI D'ORDINE

Modello	Descrizione
TD0321S02	TEIDE Power Q, 13.46"(342mm), Ø0.95"(24mm), 120°, 10W, 24vdc, Cable 10ft(3m) with M12-A 3P Male, Opal Polycarbonate
TD0321S03	TEIDE Eco, 13.46"(342mm), Ø0.95"(24mm), 120°, 5W, 24vdc, Cable 10ft(3m) with M12-A 3P Male, Opal Polycarbonate
TD0621S02	TEIDE Power Q, 25.28"(642mm), Ø0.95"(24mm), 120°, 20W, 24vdc, Cable 10ft(3m) with M12-A 3P Male, Opal Polycarbonate
TD0621S03	TEIDE Eco, 25.28"(642mm), Ø0.95"(24mm), 120°, 10W, 24vdc, Cable 10ft(3m) with M12-A 3P Male, Opal Polycarbonate
TD0921S02	TEIDE Power Q, 37.08"(942mm), Ø0.95"(24mm), 120°, 30W, 24vdc, Cable 10ft(3m) with M12-A 3P Male, Opal Polycarbonate
TD0921S03	TEIDE Eco, 37.08"(942mm), Ø0.95"(24mm), 120°, 15W, 24vdc, Cable 10ft(3m) with M12-A 3P Male, Opal Polycarbonate
TD1221S02	TEIDE Power Q, 48.90"(1242mm), Ø0.95"(24mm), 120°, 40W, 24vdc, Cable 10ft(3m) with M12-A 3P Male, Opal Polycarbonate
TD1221S03	TEIDE Eco, 48.90"(1242mm), Ø0.95"(24mm), 120°, 20W, 24vdc, Cable 10ft(3m) with M12-A 3P Male, Opal Polycarbonate
TD1521S02	TEIDE Power Q, 60.71"(1542mm), Ø0.95"(24mm), 120°, 50W, 24vdc, Cable 10ft(3m) with M12-A 3P Male, Opal Polycarbonate
TD1521S03	TEIDE Eco, 60.71"(1542mm), Ø0.95"(24mm), 120°, 25W, 24vdc, Cable 10ft(3m) with M12-A 3P Male, Opal Polycarbonate
CLIP24	TEIDE, chrome-plated steel clip kit, Ø24mm